

OPTICAL

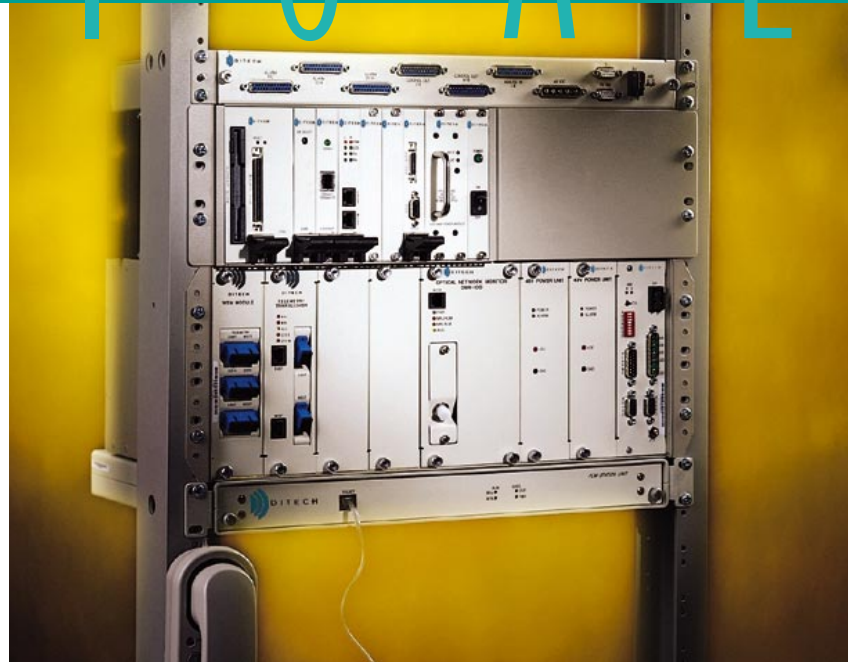
OPTICAL TELEMETRY SYSTEM

OPTICAL TELEMETRY SYSTEM

- Open interface architecture for multi-vendor environments
- Fully redundant bidirectional system using one fiber
- User friendly browser interface
- Spare capacity supports user-defined options
- Digital orderwire for craft access
- External alarms and controls
- Self-healing and self-segmenting
- 1310nm or 1510nm out-of-band transmission
- Low power consumption
- Easy installation and operation
- 5 year warranty



DITECH



Ditech's Optical Telemetry System provides the best solution for element management and facility monitoring required by today's multi-vendor optical networks. Multiple standard interfaces interconnect all site equipment for pass-through transport.

A bidirectional optical supervisory channel allows all telemetry and orderwire to be efficiently transported up to 100km on a single fiber. Because orderwire is digital, talker levels are not degraded when multiple parties are on line simultaneously. Alarm I/O panels are available for external alarm and contact closure monitoring of the physical plant, and nearly half of the 1.5Mb/s, out-of-band, optical supervisory channel is available to be added for user-defined functionality as required.

Ditech's Optical Telemetry Systems are easy to install and operate. Their compact size, low power, and feature-rich design, provide a user-friendly platform ideal for supporting Ditech or multi-vendor optical telemetry requirements.

OPTICAL TELEMETRY SYSTEM

TECHNICAL SPECIFICATIONS

TRANSPORT LAYER

Supervisory Wavelength	1310nm or 1510nm
Link Budget	< 35dB bidirectional < 41dB unidirectional
Shelf Dimensions	7" (H) x 17.4" (W) x 11" (D)
Weight	33lb fully loaded

PROCESSOR LAYER

CPU	100MHz Pentium processor
Hard Drive	810 MB capacity
Shelf Dimensions	5.25" (H) x 17.4" (W) x 7" (D)
Weight	48lb fully loaded

APPLICATION MODULES

64Kb/s Sync module	Two 64Kb/s interfaces
Ethernet module	10BaseT/100 BaseT interface
4xCom module	Serial interfaces (4) for user applications - RS422, RS485 or RS232
Orderwire unit	Digital voice channel for craft access
External Alarm unit	36 alarm inputs, 16 control outputs, 8 analog inputs. Expandable to 16 units per site

INTERFACES

TL1 interface
TCP/IP browser interface

ENVIRONMENTAL/MECHANICAL

Operating Temperature	0° to 65° C, convection cooled
Humidity	0° to 85%, non-condensing

ELECTRICAL

Power Supply	-48 VDC
Power Consumption	60W typical



ISO 9001

Specifications may change without notice TDS-OTS-98